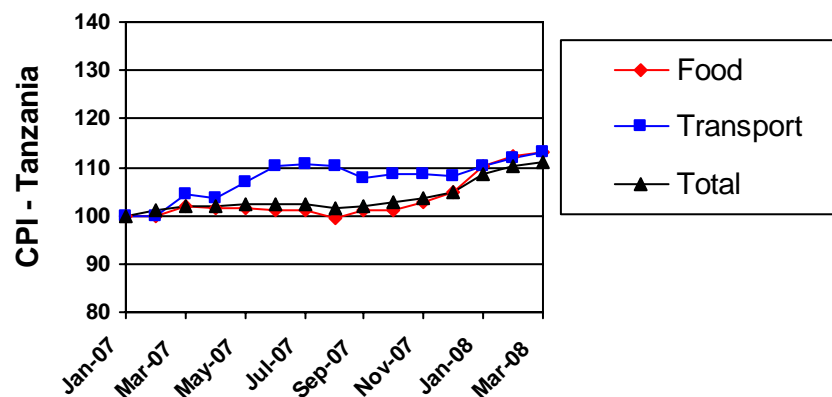
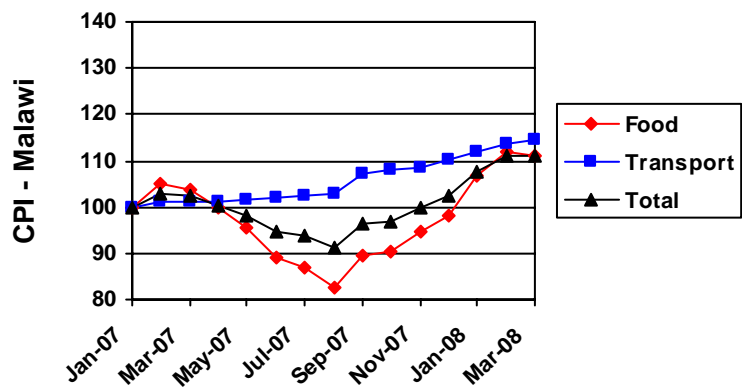
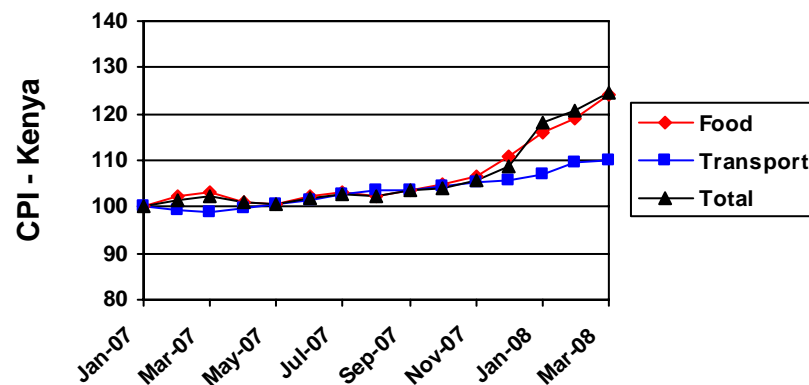
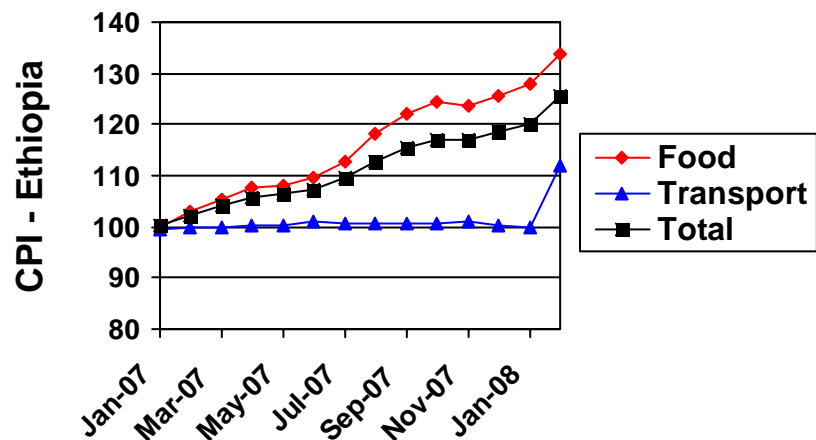
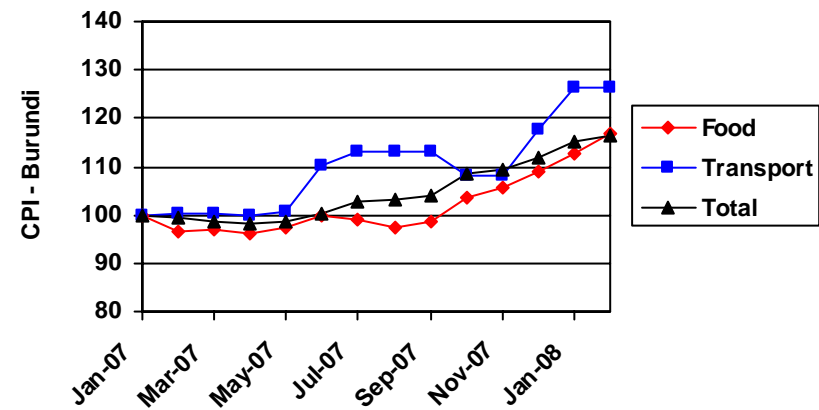
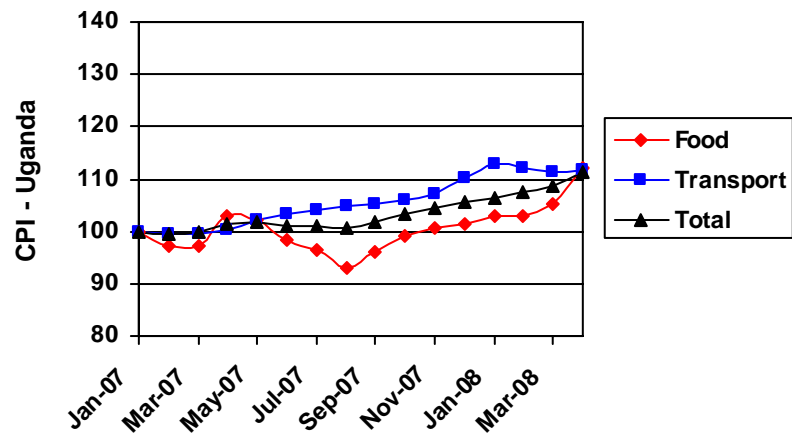


Annex 2. Additional Figures for the report

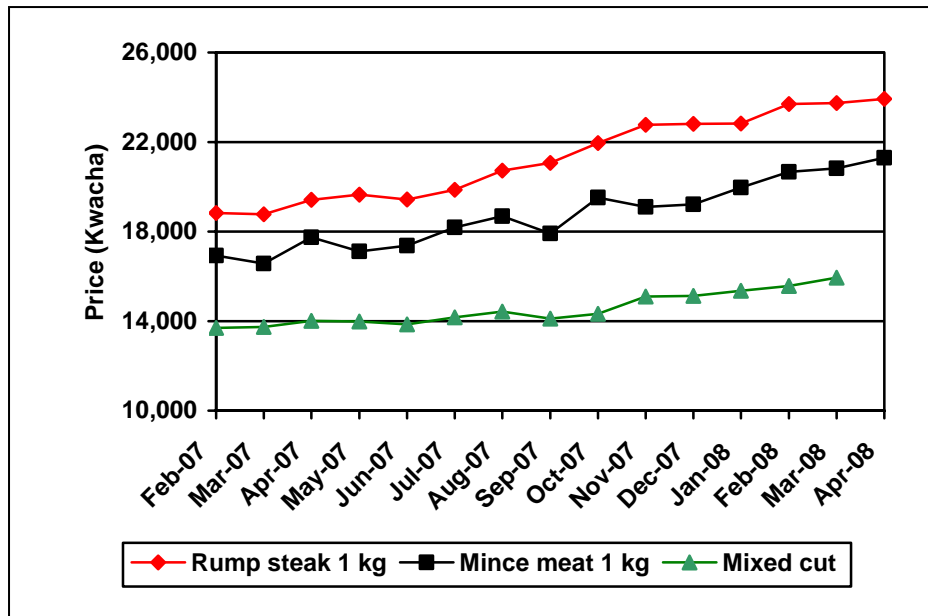
Annex Figure 1. CPI for Ethiopia, Kenya, Malawi, Tanzania, Uganda and Burundi.





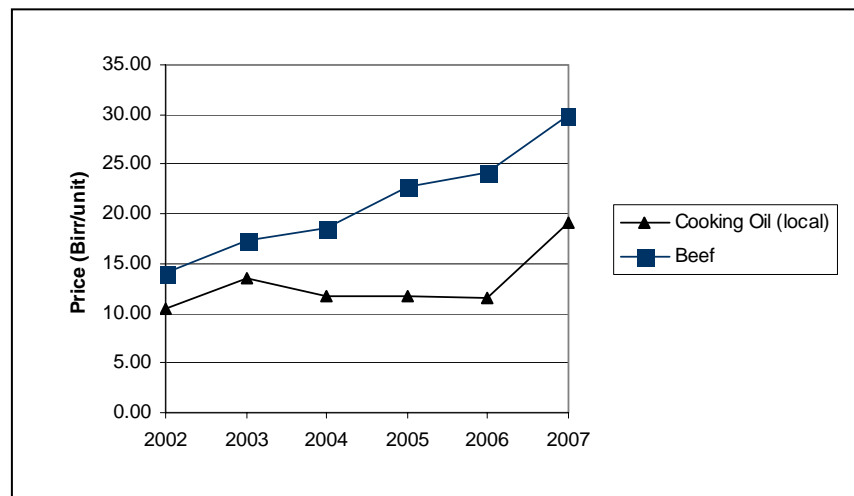
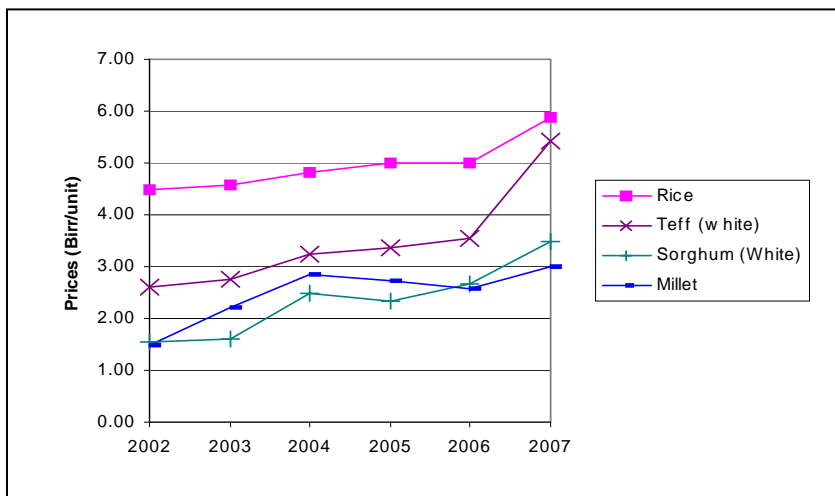
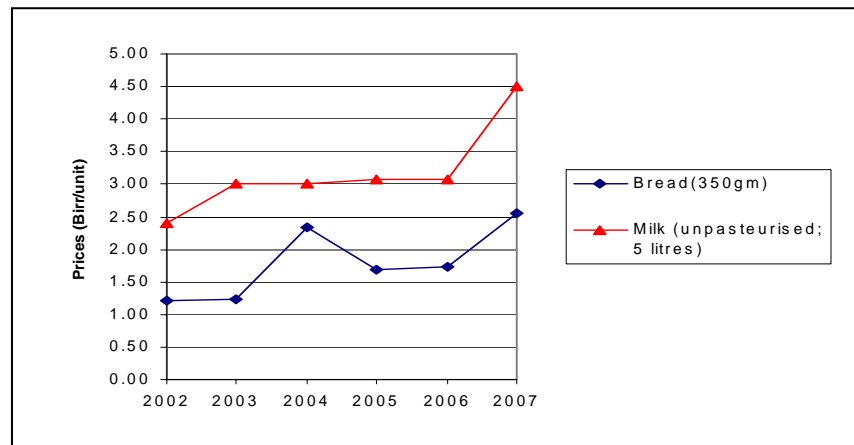
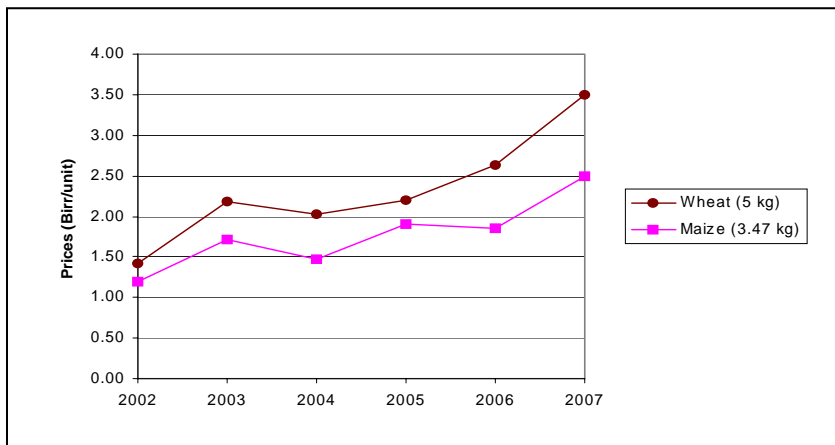
Sources: Ethiopia Central Statistical Agency (2008b); Central Bank of Kenya (2008); Kenya National Bureau of Statistics (2008a, 2008b); National Statistical Office of Malawi (2008); Tanzania National Bureau of Statistics (2008); ISTEERU (2008); Uganda Bureau of Statistics (2008b).

Annex Figure 2. Evolution of meat prices in Zambia



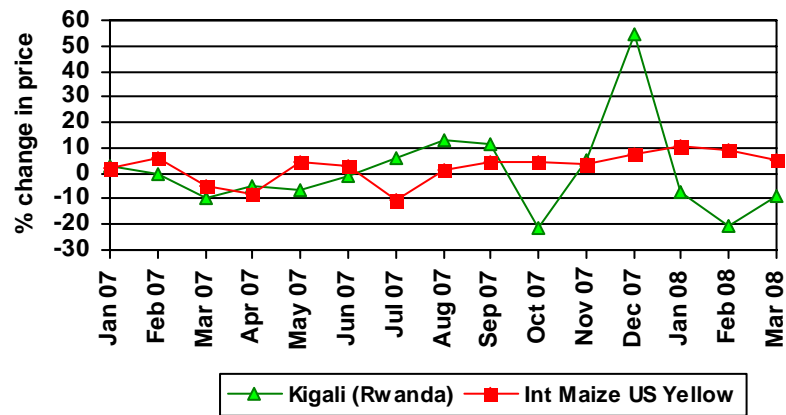
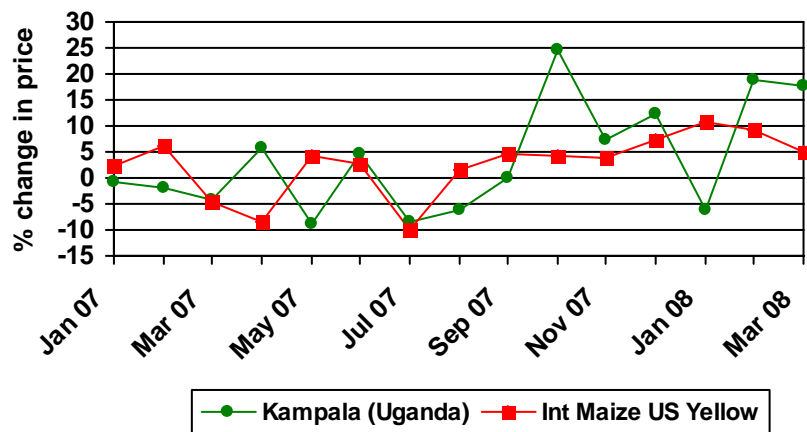
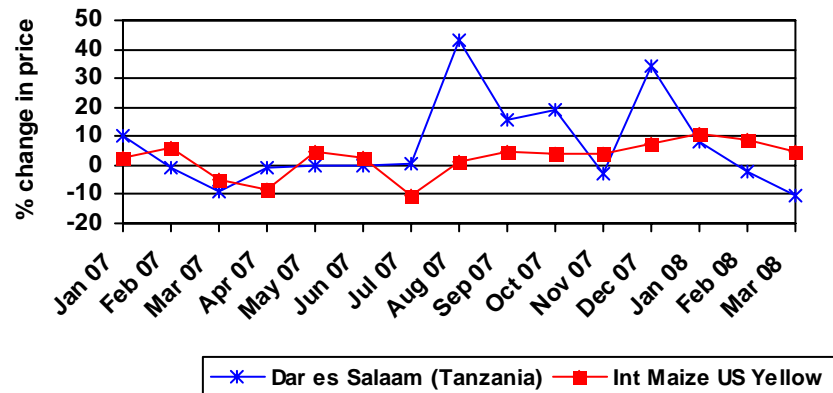
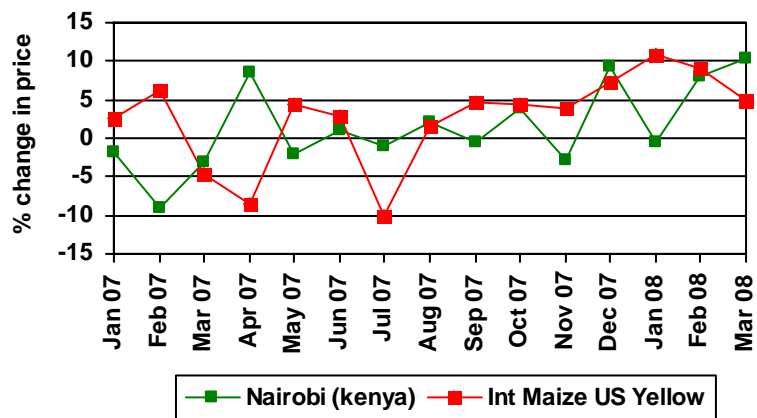
Source: Central Statistical Office of Zambia (2008).

Annex Figure 3. Evolution of various commodity prices in Ethiopia.



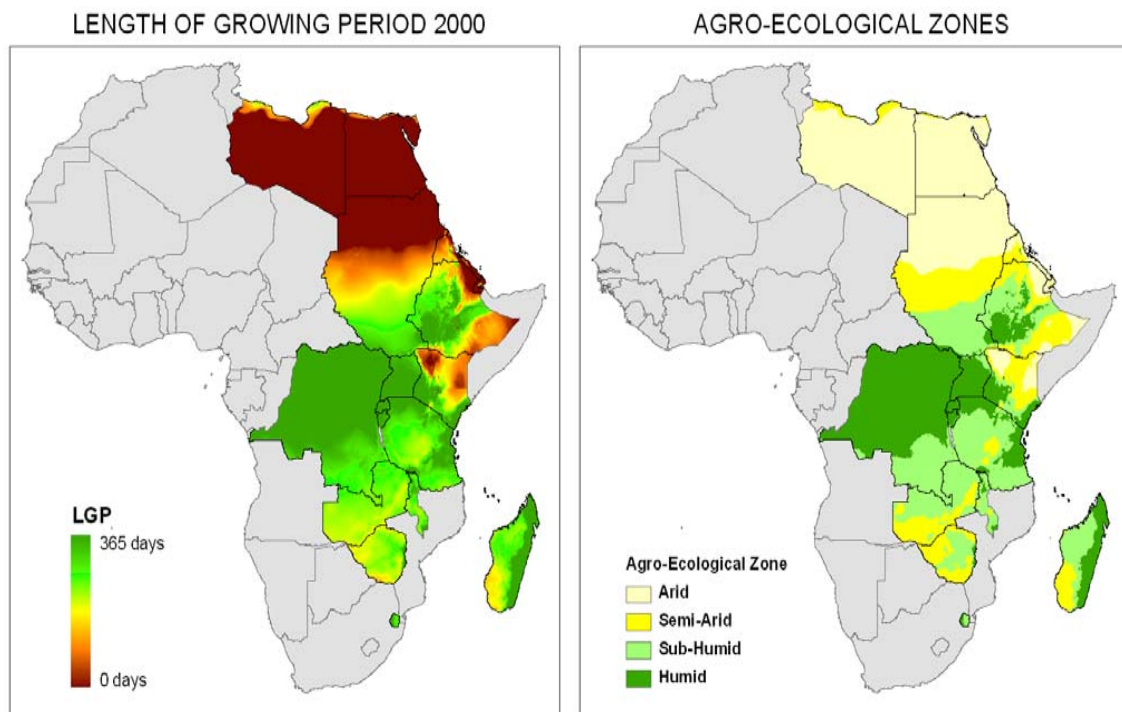
Source: Ethiopia Central Statistical Agency (2008a).

Annex Figure 4. Change in world and domestic maize price for selected ESA countries



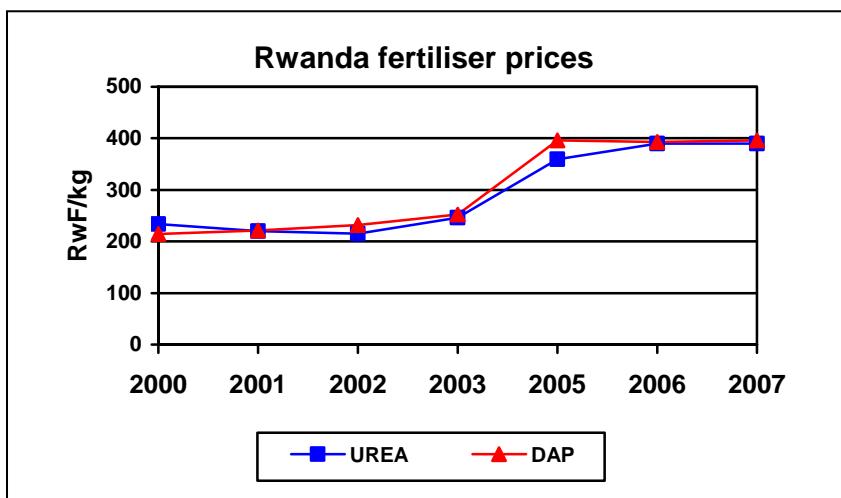
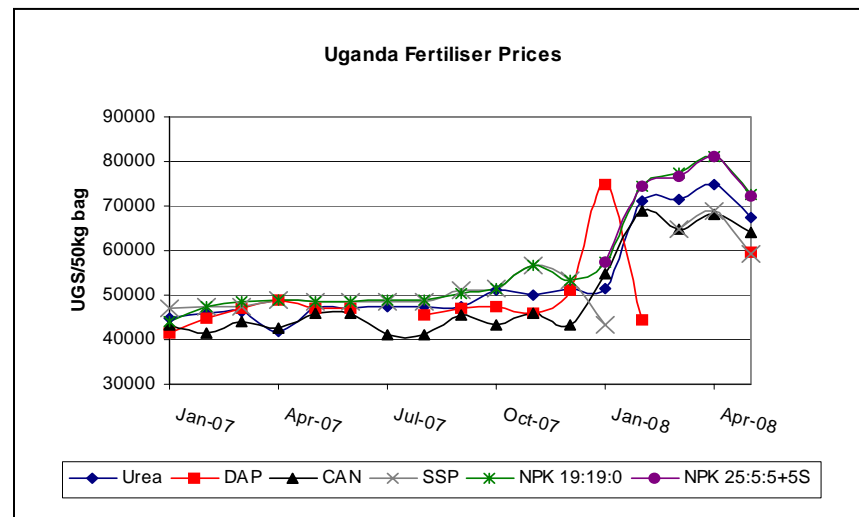
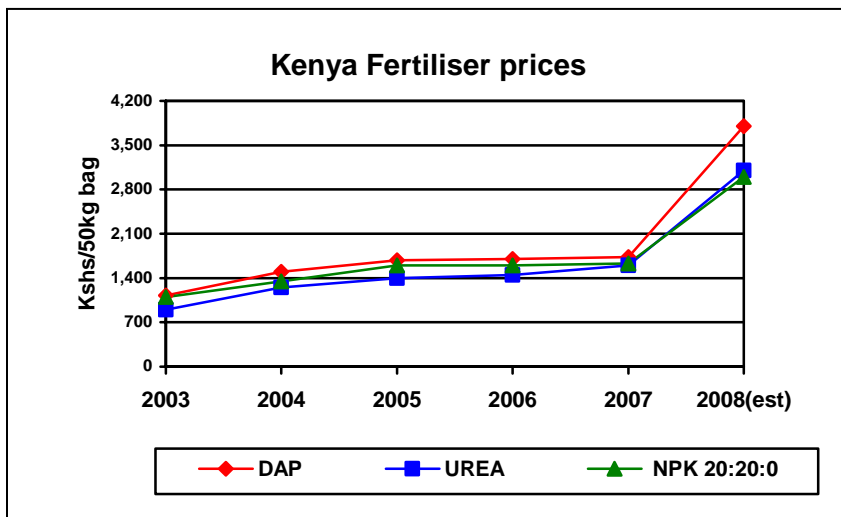
Source: FAO (2008) Ratin (2008)

Annex Figure 5: Length of growing period in ESA.



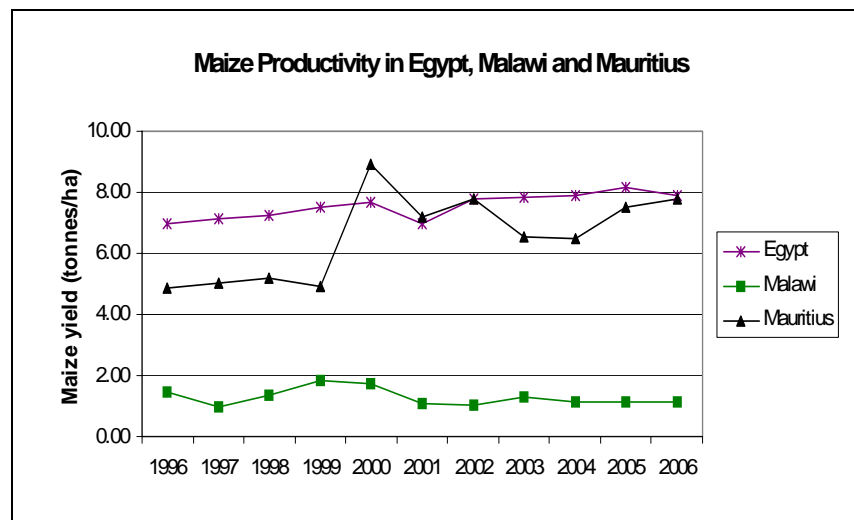
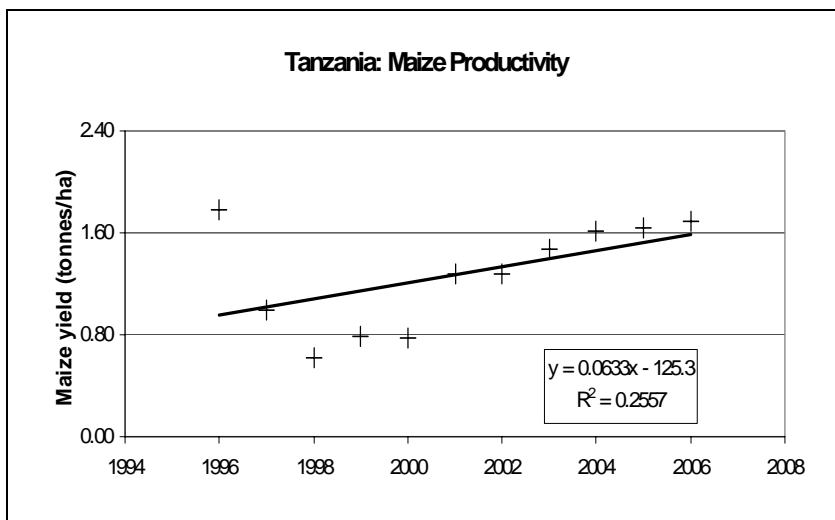
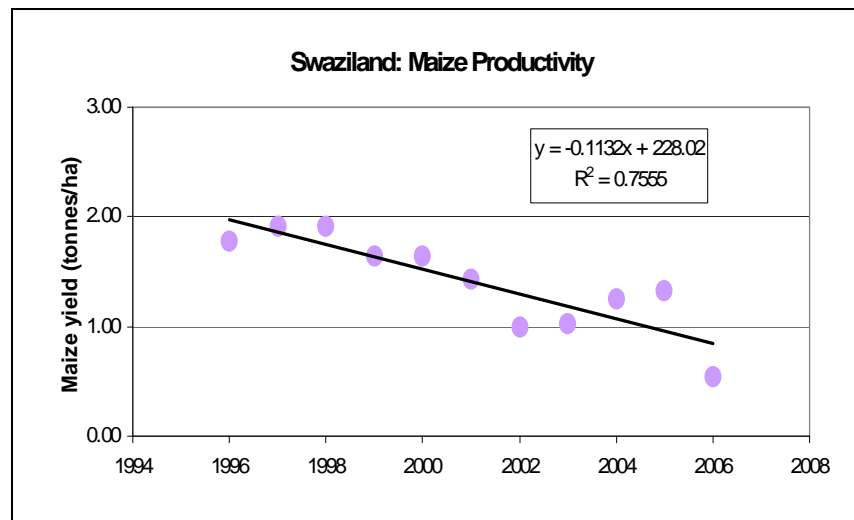
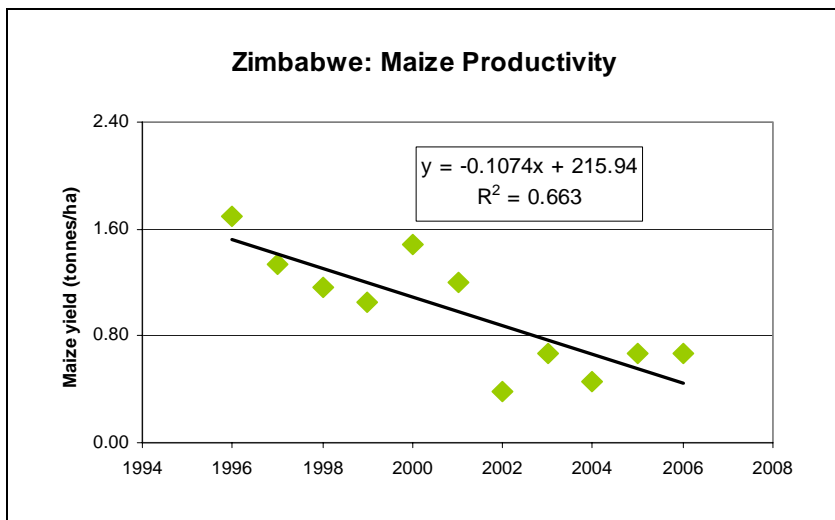
Source: ILRI (2008b).

Annex Figure 6. Evolution of fertiliser prices in selected ESA countries.



Source: Ministry of Agriculture in Kenya (2008); Agricultural Productivity Enhancement Programme in Uganda (2005-2008); Ministry of Agriculture and Animal Resources for Rwanda (2008b).

Annex Figure 7. Trend in maize productivity for selected ESA countries.



Source: FAO (2008).

This publication is an output of the Policy Analysis and Advocacy Programme (PAAP) of ASARECA and the Regional Strategic Analysis and Knowledge Support System-East and Central Africa (ReSAKSS-ECA). It has been produced with support of a grant provided to ASARECA by the United States Agency for International Development / East Africa / Regional Economic Growth and Integration (USAID/EA/REGI).

Association for Strengthening Agricultural Research in
Eastern and Central Africa (ASARECA)

PO Box 765

Plot 5, Mpigi Rd

Entebbe, Uganda

Tel: +256 414 322131

Fax: +256 414 321126

Email: asareca@asareca.org

www.asareca.org/paap

ISBN 978-92-95070-16-5 (print)

ISBN 978-92-95070-17-2 (pdf)